



Radiology Techniques Department

The Radiological Anatomy

Lecture 9

Portal venous system

By

MS.c Zeyad Tareq & MS.c Salman Mohammed

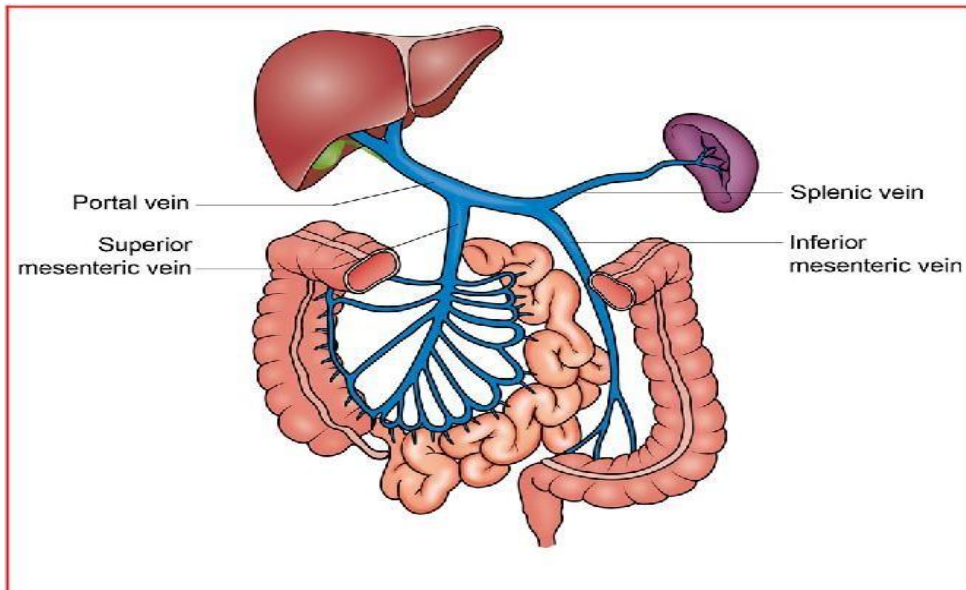
3rd Stage

2022-2023

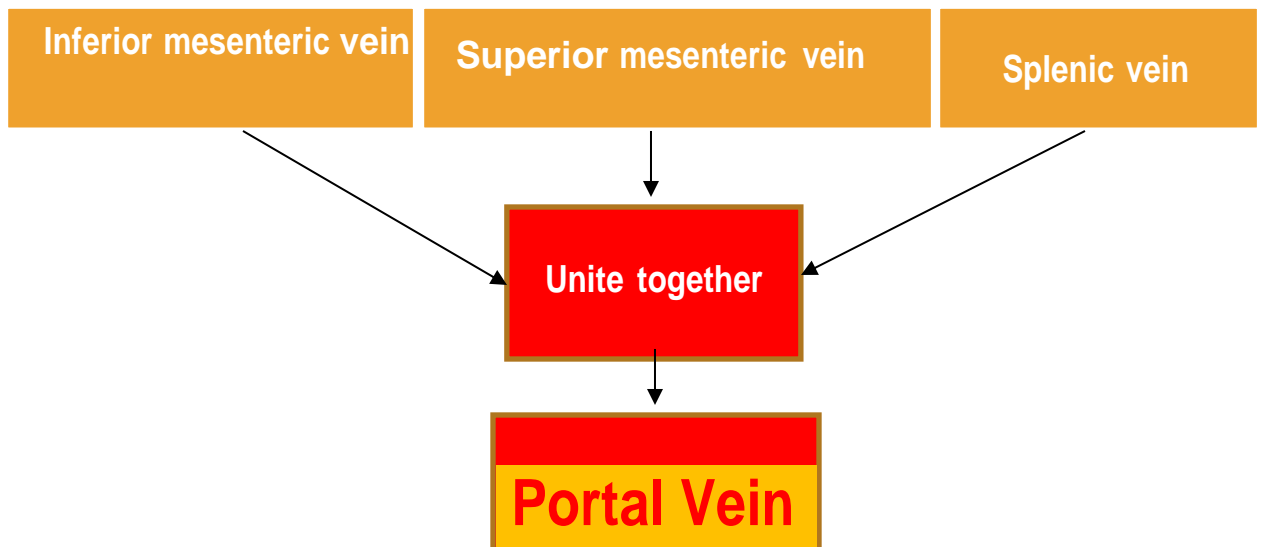
PORTAL VENOUS SYSTEM

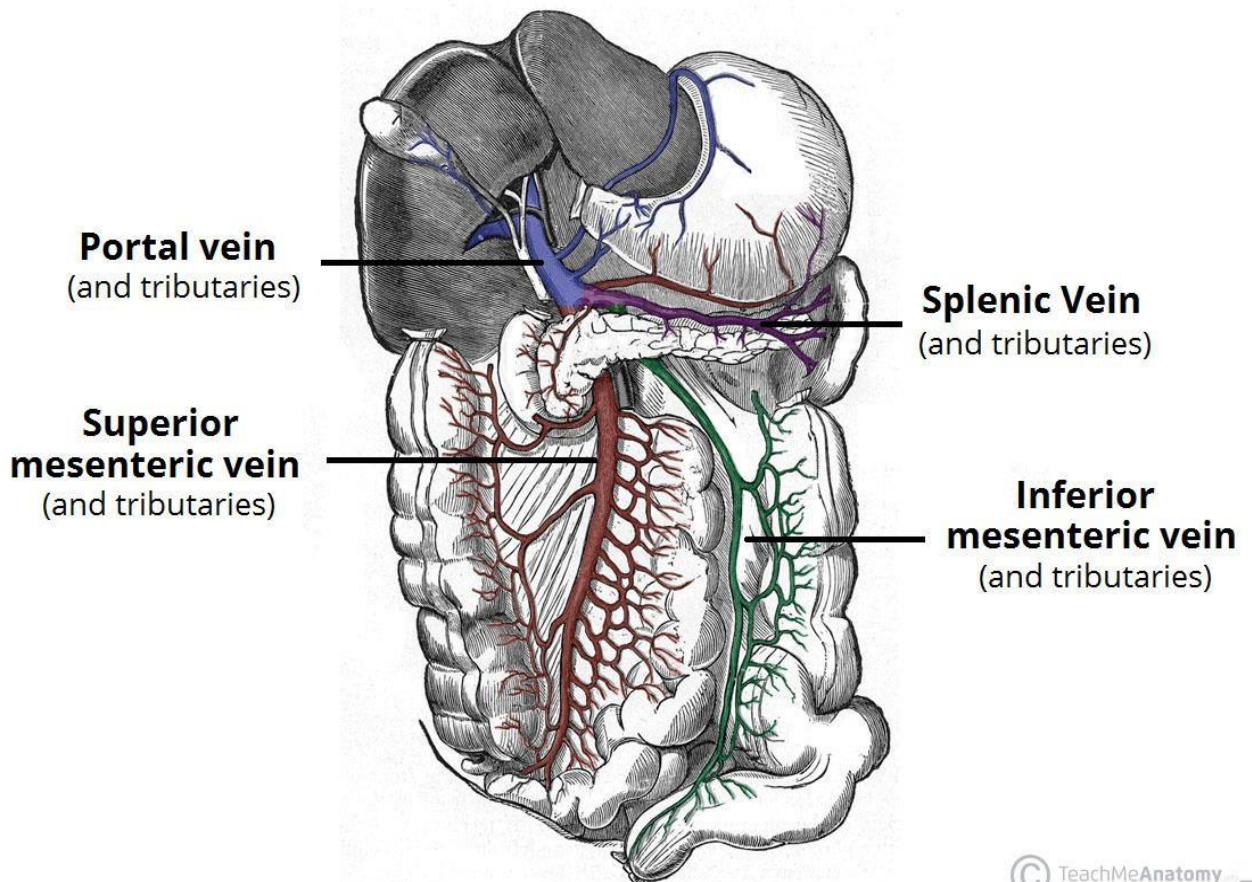
Portal venous system drain blood to **Liver** from:

1. Gastrointestinal tract (GIT)
2. Spleen
3. Pancreas
4. Gall bladder



PORTAL VENOUS SYSTEM



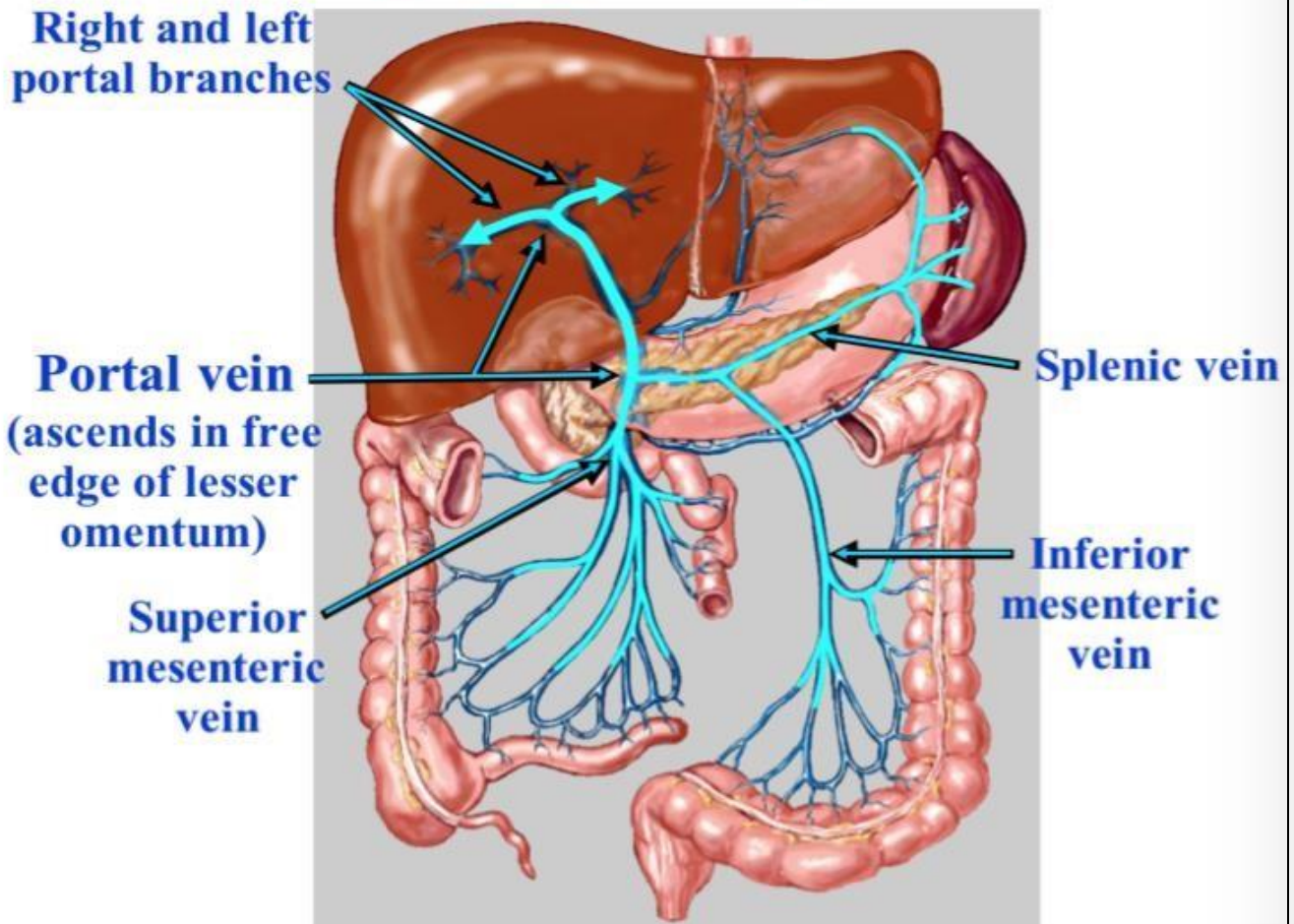


© TeachMeAnatomy

SUPERIOR MESENTERIC VEIN

- ❖ Lies to the Right of Superior Mesenteric Artery it Drains the:
 - 1- **Small Intestine**
 - 2- **Cecum**
 - 3- **Ascending and Transverse parts of the Colon**

Hepatic Portal System



INFERIOR MESENTERIC VEIN

- ❖ LIES TO THE **LEFT** OF INFERIOR MESENTERIC ARTERY
- ❖ IT DRAINS THE **HINDGUT** COMPRISING OF:
 - 1- **Distal Transverse Colon**
 - 2- **Descending Colon**
 - 3- **Sigmoid Colon**
 - 4- **Rectum**

SPLenic VEIN

❖ 4 or 5 branches leave the splenic hilum and unite to form the splenic vein
unites with the superior and inferior mesenteric veins to form the portal vein
behind the neck of the pancreas.

COURSE OF THE PORTAL VEIN

Is Formed By The Union Of Superior And Inferior Mesenteric Veins With The
Splenic Vein Behind The **Neck Of The Pancreas** At The Level Of **L1, L2** Lumbar
Vertebrae

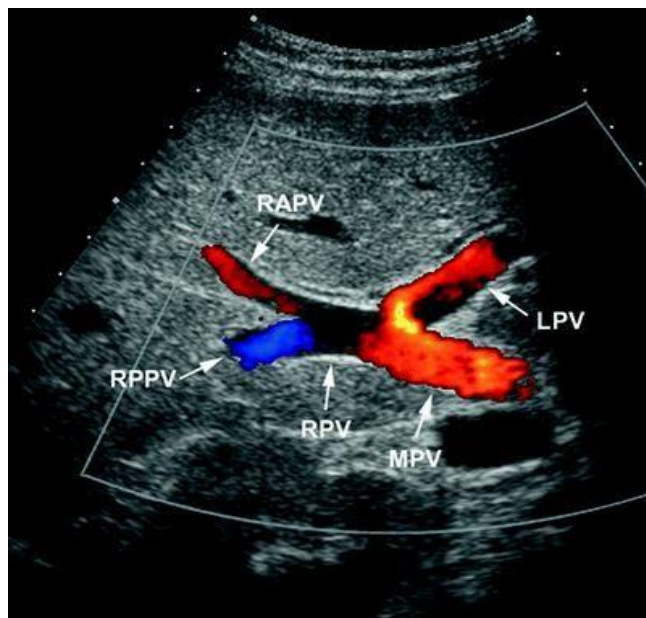
- ❖ Then it passes behind the **first** part of duodenum and receives the left
and right gastric veins
- ❖ At **porta hepatis** it divided into right and left branches

RADIOLOGY

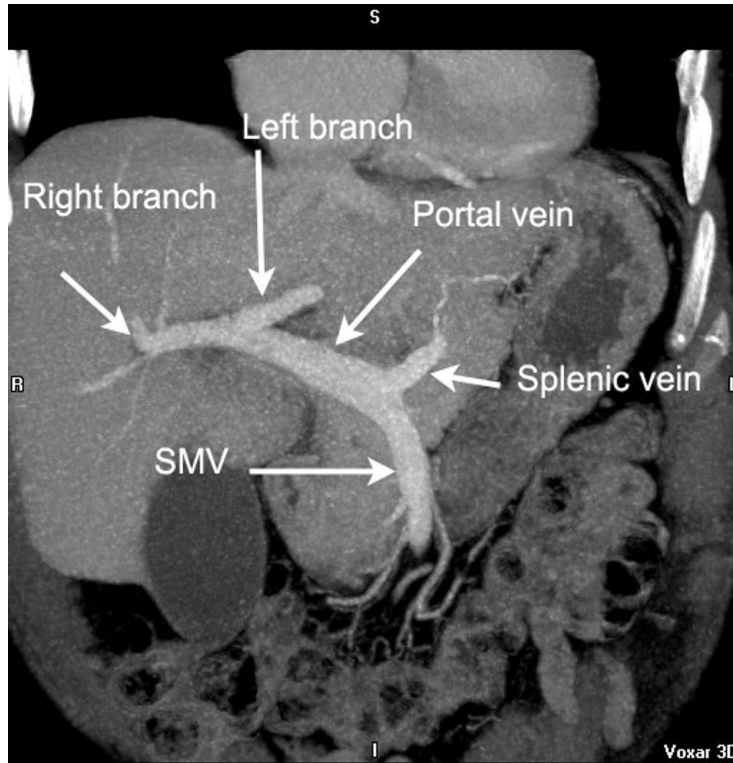
Plain abdomen: it is not visible

US :

- 1- Visible when it is posterior to the common bile duct
and hepatic artery
- 2- its diameter is greater than that of the common bile duct



CT



MR



Figure

Thank You!

